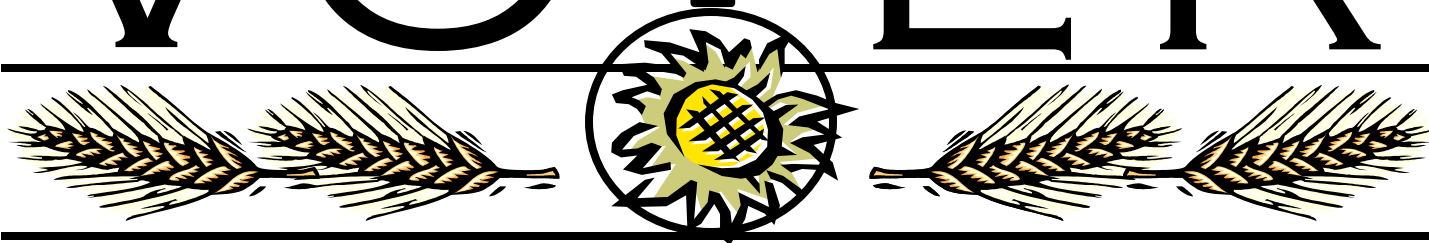


VOTER



Vol. 58, Issue 2—September 2016

Website: www.lwvsalina.org

President: Lori Trow

ltrow@marykay.com

Editor: Ann Zimmerman

ann@annzimmerman.com

BOARD OFFICERS

Lori Trow, *President*

Ann Zimmerman,

Vice President

Carla Strand, *Secretary*

Margaret Wyatt, *Treasurer*

and Budget Chair

BOARD MEMBERS

Elizabeth Bryan, *at large*

Emma Doherty, *Finance Drive*

David Norlin,

Membership Chair

Abner Perney, *Past President*

Diana Tarver, *at large*

Mike Trow, *at large*

The League of Women Voters is a non-partisan, nonprofit organization of women and men of every age, race, background and political belief. Through more than 1,200 local Leagues, state Leagues and the national organization, League members work to promote citizen action on local, state, and national issues.

The Role of Fair and Impartial Courts

KWU • SAMS CHAPEL • PIONEER HALL

Monday, September 12, 7:30 p.m.



The only two women on the Kansas Supreme Court, Justices Marla Luckert (left) and Carol Beier (below right), will address the people

of Salina and Salina's LWV for the Fall Issues Forum on Monday, Sept. 12.

Of the seven justices on the Supreme Court, five will be on your November ballot along with several other judges. Kansas judges/justices are voted to be retained or removed after their first year on the bench and every few years after that (see www.kansasjudgereview.org).

Like the nation, Kansas has three branches of government: the **Legislative** (House and Senate), the **Executive** (governor is head of this branch), and the **Judicial** (Supreme Court heads this

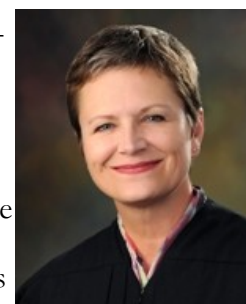
branch). With "checks and balances," each branch keeps the other two from gaining too much power.

Recent political efforts have aimed to shift that balance of power. Your vote in November may affect the balance.

The governor and legislature have been working to change the long-standing method of selecting judges to give the governor more power to choose the judges he wants, especially Supreme Court justices. Expect a flood of questionable "facts" in your mailbox, phone, television, computer, this fall.

The Salina League acknowledges the generosity of Kansas Wesleyan for use of Sams Chapel!

Come, ask questions, listen, learn!



INSIDE THIS ISSUE:

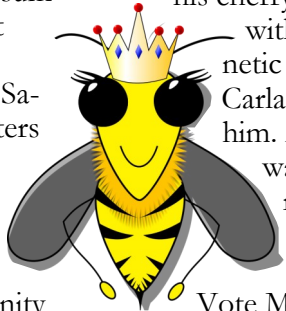
President's Report, Calendar, Officials, Judges, Voter Reg.	PAGE 2
New Member, Lunch & Learn, League Day, AccessTV, etc.	PAGE 3
Membership Form	PAGE 4

PRESIDENT'S REPORT—Lori Trow

JUDGING THE JUDGES

WOW!!! How is it that it is almost fall already??? Did we even have a spring and summer??? I guess that is what happens when you are busy. We members of the Salina League of Women Voters have been a VERY BUSY group of BEES. Since our last Voter we have:

- ◆ Provided voter registration tables at three community events: Salina Public Schools “Back to School Fair” on July 29; “Lights on Salina” on August 22 at Kansas State Polytechnic University; “Meet the Merchants” on August 24 at KWU.
- ◆ Held a very successful Primary Candidate Forum on July 14 at KWU’s Fitzpatrick Auditorium.
- ◆ Held our Annual League Potluck Dinner on July 20 at Sunrise Presbyterian Church. Great food and conversations were had by all.



◆ Had an entry in the Tri Rivers Fair Parade. Abner Perney drove his cherry-red Ford Falcon—with LWV Salina magnetic signs attached—and Carla Strand rode with him. Ann Zimmerman walked the parade route in her Suffragette dress with a sign saying “Your Vote Matters.”

Not only have we been busy out in the community, we have also been busy behind the scenes planning events and ways to get our messages out to the people. The next few months will be very busy as we work on our mission of empowering and educating the citizens on the upcoming elections.

We have many opportunities to be visible in the community and make a positive impact. I hope you will help us and get involved in some of our activities.

—Lori

How can an informed citizen know whether to vote YES or NO on a judge?

Your ballot in the general election will contain the names of five Supreme Court justices, six Appeals Court judges, and three local district judges. At the website kansasjudgereview.org, you can see how the higher court judges are rated by the attorneys who appear in their courts and the judges they work with. (NOTE: Justice Luckert—see Page 1—is highest rated of all!) To find out about local judges, Rene Young, Paul Hickman and Jared Johnson, ask friends or League members who are attorneys: Janice Norlin, Jack Sheahon, Bruce Wyatt and Ann Zimmerman.

UPCOMING VOTER REGISTRATION TABLES

The Salina League has several upcoming opportunities for new voters to register and others to update their registrations (if they have changed their address or their name, for instance).

- ◆ Monday September 12—Southeast of Saline High School (2:45-3:20pm)
- ◆ Monday September 19—Adult Education Center (9:00-11:00am)
- ◆ Tuesday September 20—Adult Education Center (evening)

There will also be times at Central and South High Schools. Thanks to the LWV members helping with these!

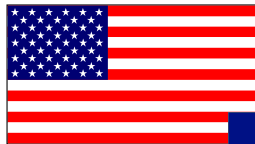
CALENDAR



- SEPT
- 12 Fall Issues Forum
 - 20 September board meeting
 - 29 Big 1st Dist. candidate forum
- OCT
- 6 Local candidate forum
 - 11 Oct. Lunch & Learn
 - 13-14 & 17-18 Late night voter registration, open until 9pm
 - 15 Fall League Day, Manhattan
 - 18 Voter registration ends
 - 18 October board meeting
 - 19 Advance mail voting begins
 - 24 Advance voting at county clerk’s office begins
- NOV
- 8 General Election
 - 15 Nov. Lunch & Learn
 - 15 November board meeting

YOUR ELECTED OFFICIALS

US President: Barack Obama
www.whitehouse.gov/contact
 (202)456-1414



US SENATE: Pat Roberts
 (202)224-4774
www.roberts.senate.gov

Jerry Moran (202) 224-6521
www.moran.senate.gov

US HOUSE of REPRESENTATIVES:
 Tim Huelskamp (202) 225-2715
www.huelskamp.house.gov

KS GOVERNOR: Sam Brownback
www.governor.ks.gov
 877-KSWORKS (877-579-6757)

KS SENATE:
 Tom Arpke 785-296-7369
Tom.Arpke@senate.ks.gov



KANSAS HOUSE of REPRESENTATIVES:
 Dist. 69—J.R. Claeys
 785 296-7670
jrclaeys@house.ks.gov

Dist. 71—Diana Dierks
 (785)296-7642
diana.dierks@house.ks.gov

Dist. 108—Steven Johnson
 (785)296-7696
steven.johnson@house.ks.gov

**Welcome
New Member
JOAN RATZLAFF**

Spending her working hours doing environmental compliance work (first for KDHE and now for the Kansas Department of Ag), Joan Ratzlaff still has made time to help found and now steer the Salina Area Workers Coalition. Her wide-ranging interests include local food, resilient communities, worker rights, social justice, nature and collaborations with “diverse others” in support of these interests. She is looking forward to retirement when she’ll have time to do even more!

Her son, Russell French, just graduated from KSU in May with a BS in math and a minor in philosophy. Her father, professor *emeritus* of biology in Pennsylvania, is an active 90 years old. She has three brothers – a retired bicycle mechanic in Salina and two others, one near each coast.

With a master’s degree in environmental science, she moved from Oklahoma 20 years ago seeking work for herself and good schools for her son. Now a member of Smoky Hills Audubon, Women for Kansas, Union of Concerned Scientists and several other groups, she was active in the Drive for Five and is currently on the Salina Solid Waste Management Committee.

Over the years, her jobs have run the gamut from service station attendant to truck farm owner/operator, to construction worker to canine security.

She joined the League to support its non-partisan voter education and “get out the vote” efforts.

Welcome Joan!

TWO FALL LUNCH & LEARNS:

- ◆ Oct. 11: American Health Alliance
- ◆ Nov. 15: Salina Adult Education Center

Join us for Lunch & Learn at the Salina Public Library’s Prescott Room at 12:15 p.m. Feel free to bring your lunch and eat while you listen.

September will not include a Lunch & Learn this year because of the many other fall LWV events. November’s program is on the third Tuesday because of the election on Nov. 8.

**FALL LEAGUE DAY
Manhattan, Oct. 15**

Statewide League of Women Voters events allow local members to connect with our colleagues in the eight other Local Leagues across Kansas and broaden our understanding of issues and strategies.

This year’s **Fall League Day is Saturday, October 15, at Manhattan’s College Avenue United Methodist Church, 1609 College Ave. Cost: \$30. Salina League will pay half of that, so the cost to you is just \$15, which includes lunch.**



Contact a board member about carpooling.

October 1 is the registration deadline.

Here’s the agenda:

- 9-9:30** Registration and mixer
- 9:30-9:45** Welcome from LWVK co-president
- 9:45-10** Manhattan League highlights
- 10-10:30** Other Local League highlights
- 10:15-10:45** Breakout session (for state study committee only)
- 10:30-10:45** Break
- 10:45-11:15** Guidelines to the Future:
New Bylaws, Website, Social Media
- 11:15-11:30** Did We Get Out The (Primary) Vote?
- 11:30-Noon** Can We Save Kansas? Energizing the Hispanic Community
- Noon-1** Lunch/Speakers: The Young Voter Group, Manhattan
- 1-1:55** Engaging Members to Lead the League
- 1:55-2:05** Break
- 2:05-3** Getting and Keeping Members Engaged
- 3:00** ADJOURN

**NEW LWV Show on
Community Access TV**

Salina League member Mike Trow has now produced two episodes of the [League of Women Voters Show](#) on Salina Community Access Television.

First episode lasted 60 minutes and included several videos produced by the League of Women Voters U.S.

Second episode, just 30 minutes, featured long-time Saline County Clerk Don Merriman discussing the many details of elections.

Share your ideas for future episodes. And THANK YOU, Mike!

**PRIMARY FORUM
a Great Success!**

On July 14, 2016, for the first time in the memory of any League member, the Salina League of Women Voters sponsored a candidate forum for primary candidates. General election candidate forums have always been co-sponsored by the Salina Chamber of Commerce. The LWV saw a major need for information about primary candidates, and the Chamber did not express interest in organizing a forum. So we did it ourselves.

The event took place at KWU Fitzpatrick Auditorium. Salina LWV expresses great appreciation for KWU generously allowing the use of the auditorium. The stage was packed with candidates and the 150-seat auditorium nearly full. Thanks to all who helped organize and carry out this significant event.

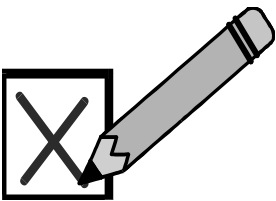
OTHER NOTES

- ◆ Contact a board member for “Your Vote Matters” yard signs and “Voting is Good for the Constitution” T-shirts.
- ◆ If you take photos at League events, please share them with League President Lori Trow for Facebook and website.



League of Women Voters of Salina
PO Box 502
Salina, KS 67402-0502
www.lwvsalina.org

JOIN US



JOIN IN THE ACTION: Become a member of the League of Women Voters of Salina or renew your League Membership. There is no better time than NOW for you to join the League. Please take a moment now to become a member.

NAME: _____
 ADDRESS: _____
 CITY/STATE/ZIP: _____
 PHONE: _____ EMAIL: _____

_____ Yes, I want to add my voice to yours by joining the League at the following level:

- _____ Single Membership (circle one)
 - _____ *Contributing Level* \$55.00
 - _____ *Sustaining Level* \$47.00
- _____ Family Membership (circle one)
 - _____ *Contributing Level* \$80.00
 - _____ *Sustaining Level* \$68.00
- _____ Student Membership \$20.00

_____ I am unable to join the League at this time, but enclosed is my contribution of \$_____.

For more information, please contact: **David Norlin, Membership Chair**
608 E. Republic, Salina, Kansas 67401
 Telephone: **825-7847** Email: **davidnor@sbcglobal.net**

Make checks payable to: **The League of Women Voters of Salina**, and mail to **PO Box 502, Salina, KS 67402-0502**.